

Series	LED	LED colors	Opal glass	Dimming	Exterior	Interior	Feed-Thru	Other Options
252	●	●	●	●	●	●	●	Faceplate styles Junction box

Steplites

252 SERIES

Description

The 252 Series is a versatile range of Steplites, appropriate in a variety of interior or exterior locations. The rugged construction, engineering excellence, and quality make these fixtures ideal for use in most public areas.

Features

With LED modules or E26 medium base lamps this fixture may be used for combustible interior construction. All models are suitable for concrete pour. Exceptional durability is provided by the thick cast aluminum louvered faceplate and frosted tempered glass diffuser. Models with a formed steel faceplate are available with a convenience outlet. Cole Steplites feature a cast aluminum junction box which may be easily field mounted to either the back or bottom of the housing to best suit installation conditions.

Applications

252 steplite fixtures will work well in very cold climates. They are ideal in low walls and side wall mounting at stairs or as night lights in hallways or rooms. The vertical format is suitable for bollards.

Custom

If your project demands a special fixture we would be pleased to discuss the production of modified standard fixtures or custom fixtures to suit your specific conditions. For more information on our custom capabilities, please contact your local Cole representative.



L252W-L26G-J and L252W-L26-J



L252W-L26V-J — *Junction Box*



L252WG-J and L252W-J



L252W-N-J — *Stainless Steel faceplate*

252 Series Steplites are available with louver or non-louvered faceplates.



The junction box on Cole Steplites may be field mounted to the back or bottom of the fixture.



L252W-L26-B — *Cast Bronze faceplate*



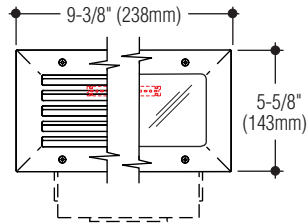
C.W. Cole & Company, Inc.
2560 Rosemead Boulevard
South El Monte, CA 91733-1593

Tel. (626) 443-2473
Fax (626) 443-9253
info@colelighting.com
www.colelighting.com

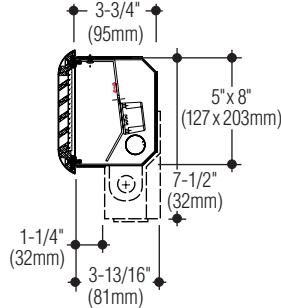
Steplites

Cast Aluminum Trim

Louvered

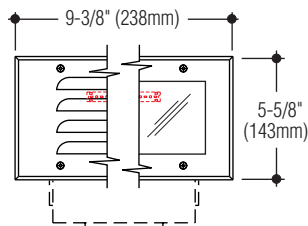


Non-louvered

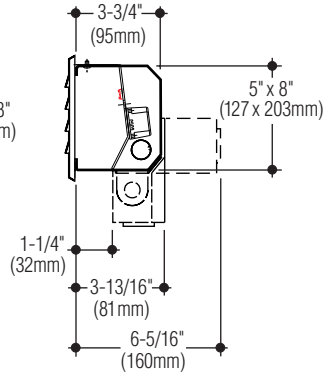


Formed Steel Trim

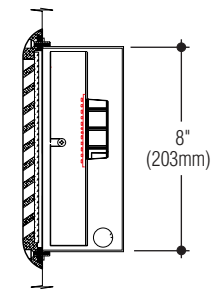
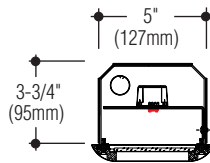
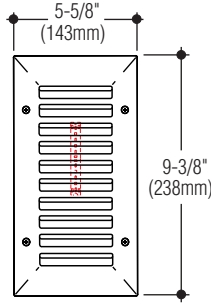
Louvered



Non-louvered



Cast Aluminum Vertical Louvered



252 SERIES

SPECIFICATIONS

Construction

- Housing is constructed from 16 gauge electro-galvanized steel finished with a white polyester coating
- Faceplate is 20 gauge steel with metallic aluminum polyester coating, or 20 gauge satin stainless steel, each are gasketed and retained by stainless steel screws
- Diffuser is frosted tempered glass set in silicene sealant
- Optional junction box is cast aluminum with white polyester coating
- cETLus listed suitable for wet location in any wall construction
- All models are suitable for concrete pour.

Electrical

- Fixture is wired with high performance LED modules, or one E26 medium base lamp socket
- Integral driver is standard universal voltage; optional 0-10V dimming driver available
- Housing provided with 1/2" conduit knockout on each side suitable for 4 wire thru-wiring, 2 in and 2 out
- Optional junction box allows 8 wire thru-wiring, 4 in and 4 out. Provided with two 1/2" tapped conduit entrances in the bottom and one 1/2" tapped conduit entrance in each side.

Mounting

Housing has flange with holes for mounting.

Catalog Numbers	Cast aluminum faceplate			Formed steel faceplate	
	Louwer, Hor.	Louwer, Vert.	Non-Louwer	Louwer	Non-Louwer
Lamp					
LED 1.5W, (126 lm @ 3000°K)	L252W-L26	L252W-L26V	L252W-L26G	L252W	L252GW
LED 3.2W, (331 lm @ 3000°K)	L252W-L26-HO	L252W-L26V-HO	L252W-L26G-HO	L252W-HO	L252GW-HO
LED 6.4W, (662 lm @ 3000°K)	L252W-L26-HO-2	L252W-L26V-HO-2	L252W-L26G-HO-2	L252W-HO-2	L252GW-HO-2
One E26 medium base lamp	T252W-L26	T252W-L26V	T252W-L26G	T252W	T252GW

Lumens shown are source. Photometric data available for Steplites can be downloaded at: <https://www.colelighting.com/photometrics>

Options

- Junction box:** Bottom or back mounted junction box as required for feed-thru. Add suffix **-J**.
- Cast Bronze faceplate:** Satin finish, clear coated. (L26 models) Add suffix **-B**.
- Stainless steel faceplate:** Louvered and non louvered. Not available in L26. Add suffix **-N**.
- Tamperproof screws:** Socket head faceplate screws. Add suffix **-TP**.
- Alternate faceplate color:** Black or white or custom color. Add suffix **-BLK**, **-WHT** or **-CC** (Contact factory for custom preference).
- Opal glass diffuser:** Tempered. Add suffix **-OPL**.

LED colors:

4000°K (146 lm), HO (384 lm), HO-2 (768 lm).

Add suffix **-4K**.

Amber* (FWC compliant, 590 nm). Add suffix **-AMB**.

Blue* Add suffix **-BLU**.

* Not available in HO-2.

Dimming: Universal voltage 0-10V driver. Add suffix **-DIM**.

Emergency battery (4 Watt): Provides up to 90 minutes operation. Add suffix **-EM**.

How to Specify

1. Select catalog number with desired features.
2. Add suffixes for options required to meet job conditions.



C.W. Cole & Company, Inc.
 2560 Rosemead Boulevard
 South El Monte, CA 91733-1593

Tel. (626) 443-2473

Fax (626) 443-9253

info@colelighting.com

www.colelighting.com