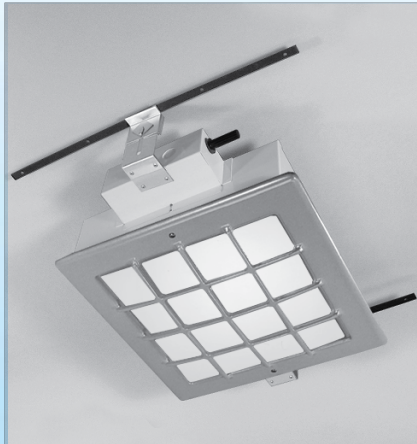
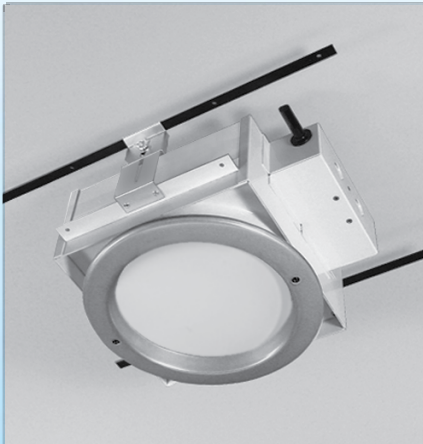


Downlites

Downlites



Cole Downlites provide efficient illumination utilizing multiple light sources. Heavy duty construction provides durability to withstand exposure to weather and physical abuse. All fixtures are furnished with cast aluminum, secured to rugged steel housings. Models are available for either dry ceiling or poured in place in concrete construction. Several options are available to tailor fixtures to particular jobs requirements.

These fixtures are particularly suitable for applications; corridors, under canopy, stairway landings, loading areas, and other locations where durability carries a special premium.

Modified or custom Downlites may also be developed to meet your exact specifications. To learn more about our custom capabilities and comprehensive range of standard lighting fixtures, call us directly or contact your local Cole representative.

*Regressed Round
Trim painted Black with
standard Opal Lens*



C.W. Cole & Company, Inc.
2560 Rosemead Boulevard
South El Monte, CA 91733-1593

Tel. (626) 443-2473
Fax (626) 443-9253
info@colelighting.com
www.colelighting.com

Downlites

Description

These round Downlites for poured concrete and dry ceiling installations are offered in two sizes. LED, and E26 medium based lamp options are available along with a variety of trims. The robust construction and weathertight option make these fixtures ideal for many interior or exterior public areas. IES photometric files are available.

Construction

- Cast aluminum trim with metallic aluminum polyester coating. Other colors are available
- 16 gauge electro-galvanized steel housing with white polyester coating
- Drop-hinged trim secured by two stainless steel captive screws
- Semi-specular aluminum reflector
- Opal glass lens is standard. Other shielding is available
- Selected models suitable for concrete pour.

Electrical

- Fixtures are wired for LEDs or E26/medium base lamps
- Drivers are universal voltage
- Integral junction box has 1/2" conduit knockouts at each end and two in back
- Junction box is accessible from above and within housing for wiring before or after the fixture is in place
- cETLus listed for wet locations when specified
- Suitable for IC/non-IC on dry ceiling construction.

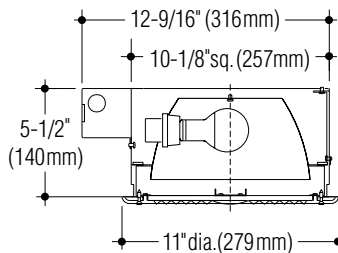
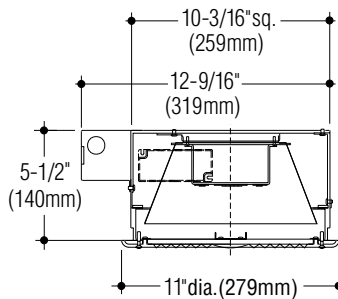
Mounting

- Housing for concrete mount models has flanges for attachment to forms
- Housing for dry ceiling construction has mounting bars and adjustable hangers.

Round Dry Ceiling Mount



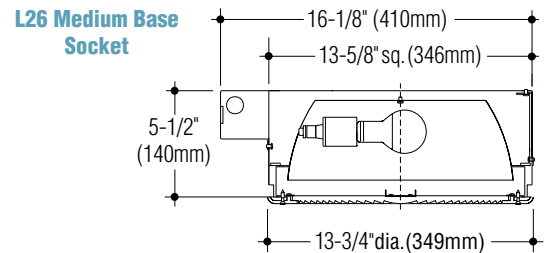
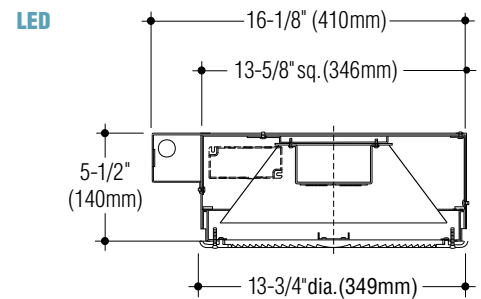
Small



Round Concrete Mount



Large



	Catalog Number Dry Ceiling	Catalog Number Concrete	Wattage/Lamp	Base
Small	DL1308RS	DL2308R	LED 21W, (3030 lm @ 3000°K)	Chip on board
	DL1308RS-HO	DL2308R-HO	LED 29W, (4240 lm @ 3000°K)	Chip on board
	DL1308RS-VHO	DL2308R-VHO	LED 43W, (6350 lm @ 3000°K)	Chip on board
	DL1608RS	DL2608R	E26 LED lamp socket	Medium base
Large	DL1312RS	DL2312R	LED 21W, (3030 lm @ 3000°K)	Chip on board
	DL1312RS-HO	DL2312R-HO	LED 29W, (4240 lm @ 3000°K)	Chip on board
	DL1312RS-VHO	DL2312R-VHO	LED 43W, (6350 lm @ 3000°K)	Chip on board
	DL1612RS	DL2612R	E26 LED lamp socket	Medium base

Lumens shown are source. | Photometric data available for Downlites upon request.

Options

Trim: Satin stainless steel. Add suffix **-N**.
 Cast louvered. (Small only) Add suffix **-L**.
 Cast regressed. Add suffix **-P**.

Diffuser:
 3/8" Frosted tempered glass. Add suffix **-HD**.

Tamperproof screws: Socket head trim screws. Add suffix **-TP**.

LED colors: 4000°K (3075 lm), -HO (4303 lm), -VHO (6445 lm). Add suffix **-4K**

Weatherproof: IP55 rated for exterior applications. Add suffix **-W**.

Emergency battery: Provides up to 90 minutes of operation. Add suffix **-EM**.

Alternate faceplate color: Black, white or custom color. Add suffix **-BLK**, **-WHT** or **-CC** (specify).

Dimming: LED, Universal voltage, 0-10V driver. Add suffix **-DIM**.

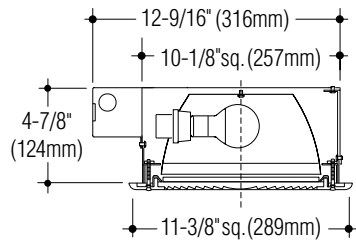
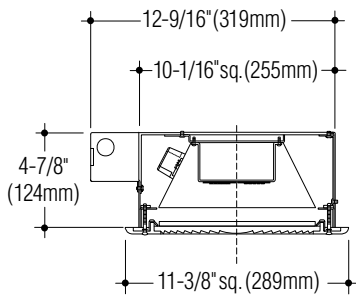


Tel. (626) 443-2473
 Fax (626) 443-9253
 info@colelighting.com
 www.colelighting.com

Square Dry Ceiling Mount



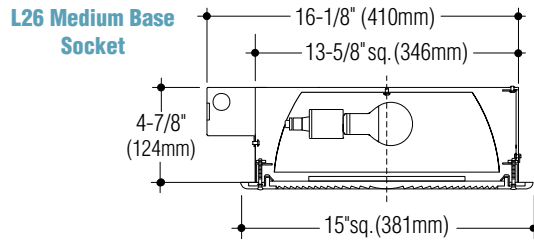
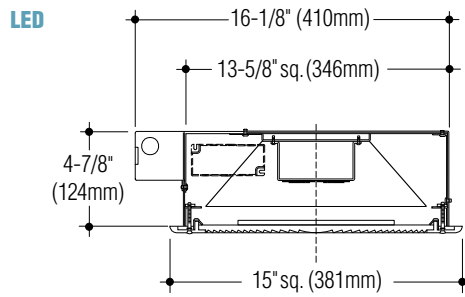
Small



Square Concrete Mount



Large



Downlites

Description

These square Downlites for poured concrete and dry ceiling installations are offered in two sizes. LED, and E26 medium based lamp options are available along with a variety of trims. The robust construction and weathertight option make these fixtures ideal for many interior or exterior public areas. IES photometric files are available.

Construction

- Cast aluminum trim with metallic aluminum polyester coating. Other colors are available
- 16 gauge electro-galvanized steel housing with white polyester coating
- Drop-hinged trim secured by two stainless steel captive screws
- Semi-specular aluminum reflector
- Opal glass lens is standard. Other shielding is available
- Select models suitable for concrete pour.

Electrical

- Fixtures are wired for LEDs or E26/medium base lamps
- Drivers are universal voltage
- Integral junction box has 1/2" conduit knockouts at each end and two in back
- Junction box is accessible from above and within housing for wiring before or after the fixture is in place
- cETLus listed for wet locations when specified
- Suitable for IC/non-IC on dry ceiling construction.

Mounting

- Housing for concrete mount models has flanges for attachment to forms
- Housing for dry ceiling construction has mounting bars and adjustable hangers.



Tel. (626) 443-2473
 Fax (626) 443-9253
 info@colelighting.com
www.colelighting.com

	Catalog Number Dry Ceiling	Catalog Number Concrete	Wattage/Lamp	Base
Small	DL1308S	DL2308	LED 21W, (3030 lm @ 3000°K)	Chip on board
	DL1308S-HO	DL2308-HO	LED 29W, (4240 lm @ 3000°K)	Chip on board
	DL1308S-VHO	DL2308-VHO	LED 43W, (6350 lm @ 3000°K)	Chip on board
	DL1608S	DL2608	E26 LED lamp socket	Medium base
Large	DL1312S	DL2312	LED 21W, (3030 lm @ 3000°K)	Chip on board
	DL1312S-HO	DL2312-HO	LED 29W, (4240 lm @ 3000°K)	Chip on board
	DL1312S-VHO	DL2312-VHO	LED 43W, (6350 lm @ 3000°K)	Chip on board
	DL1612S	DL2612	E26 LED lamp socket	Medium base

Lumens shown are source. | Photometric data available for Downlites upon request.

Options

Trim: Satin stainless steel. Add suffix **-N**.

Cast guard. Add suffix **-G**.

Cast regressed. Add suffix **-P**.

Diffuser:

3/8" Frosted tempered glass. Add suffix **-HD**.

Tamperproof screws: Socket head trim screws. Add suffix **-TP**.

LED colors: 4000°K (3075 lm), -HO (4303 lm), -VHO (6445 lm). Add suffix **-4K**

Weatherproof: IP55 rated for exterior applications. Add suffix **-W**.

Emergency battery: Provides up to 90 minutes of operation. Add suffix **-EM**.

Alternate faceplate color: Black, white or custom color. Add suffix **-BLK**, **-WHT** or **-CC** (specify).

Dimming: LED, Universal voltage, 0-10V driver. Add suffix **-DIM**.

Trim Options



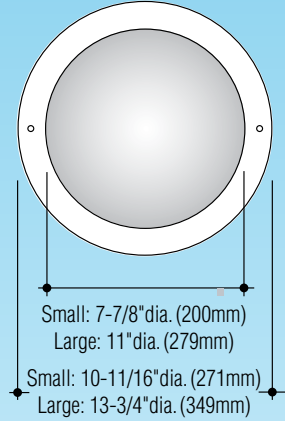
Louver

-L (small round only)



Stainless Steel Trim

-N Trim (round)



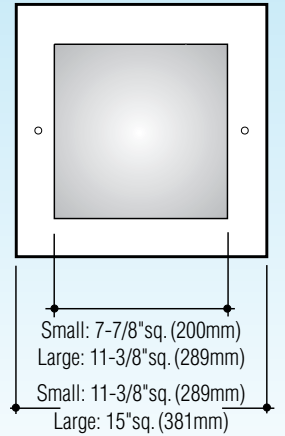
Regressed Round

-P (all)



Stainless Steel Trim

-N Trim (square)



Regressed Square

-P (all)



**Guard with
Tempered Glass Diffuser**

-G Trim (all square)



C.W. Cole & Company, Inc.
 2560 Rosemead Boulevard
 South El Monte, CA 91733-1593

Tel. (626) 443-2473
 Fax (626) 443-9253
 info@colelighting.com
www.colelighting.com