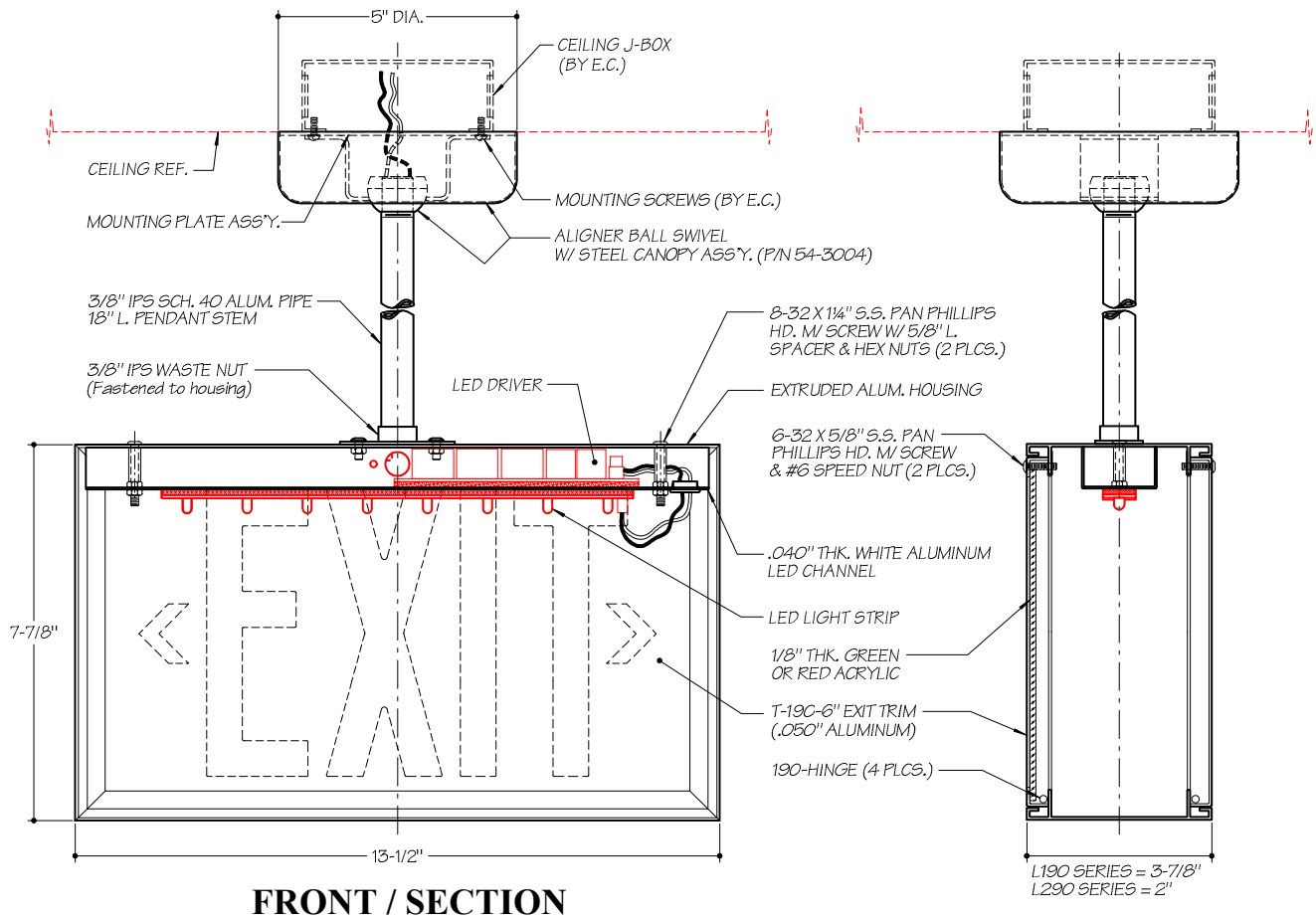


Installation Instruction Sheet

CAT. No.: L196-S1 / LD196-S1 / L296-S1 / LD296-S1 (PENDANT MOUNT)



INSTRUCTION STEPS:

1. Turn off electrical power supplied to housing.
2. Feed electrical wires thru mounting pipe stem.
3. Attach stem to waste nut on top of housing.
4. Attach stem to the ball swivel canopy.
5. Attach stem/ceiling mounting plate to junction box, using #8 screws (by E.C.).
6. Make electrical wire connections.
7. Slide canopy cover up & attach to ceiling mounting plate.

NOTE:

*** THIS PRODUCT MUST BE INSTALLED IN ACCORDANCE WITH THE APPLICABLE INSTALLATION CODE BY A PERSON FAMILIAR WITH THE CONSTRUCTION AND OPERATION OF THE PRODUCT AND THE HAZARDS INVOLVED.**

*** CONTACT WITH ACID-WASH OF ANY TYPE TO ANY SURFACE OF FIXTURE WILL/MAY VOID WARRANTY.**

COLE
Lighting