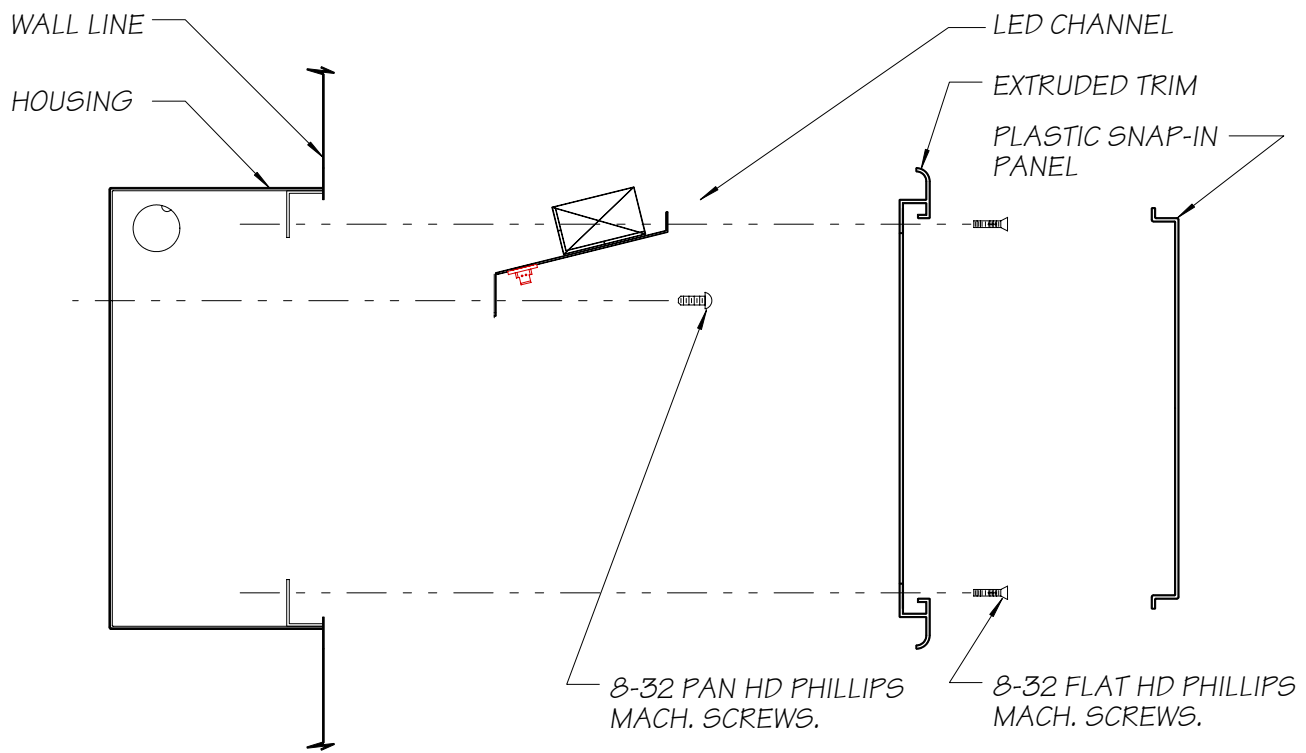


# SIGN INSTALLATION INSTRUCTIONS

CATALOG NO.:S191-L (ROF)



1. Turn off electrical power supplied to fixture
2. Remove plastic snap-in panel or inner metal frame (ROF)
3. Remove (4) 8-32 flat hd. phillips m. screws to remove trim.
4. Remove (2) 8-32 pan hd. phillips m. screws to remove lamp channel.
5. Mount housing using holes in back or sides.
6. Make electrical wire connections to lamp channel.
7. After completing wire connections and mounting the housing, Re-install the lamp channel previously removed.
8. Re-attach trim assembly.
9. Re-attach snap-in panel or inner trim assembly (ROF)

## NOTE:

"THIS PRODUCT MUST BE INSTALLED IN ACCORDANCE WITH THE APPLICABLE INSTALLATION CODE BY A PERSON FAMILIAR WITH THE CONSTRUCTION AND OPERATION OF THE PRODUCT AND THE HAZARDS INVOLVED".

## REVISIONS

Rev.5-23-16 dtw

C.W. Cole & Co., Inc.

2560 N. Rosemead Blvd. So. El Monte, CA 91733 . (626) 443-2473 . Fax: (626) 443-9253

**COLE**  
Lighting