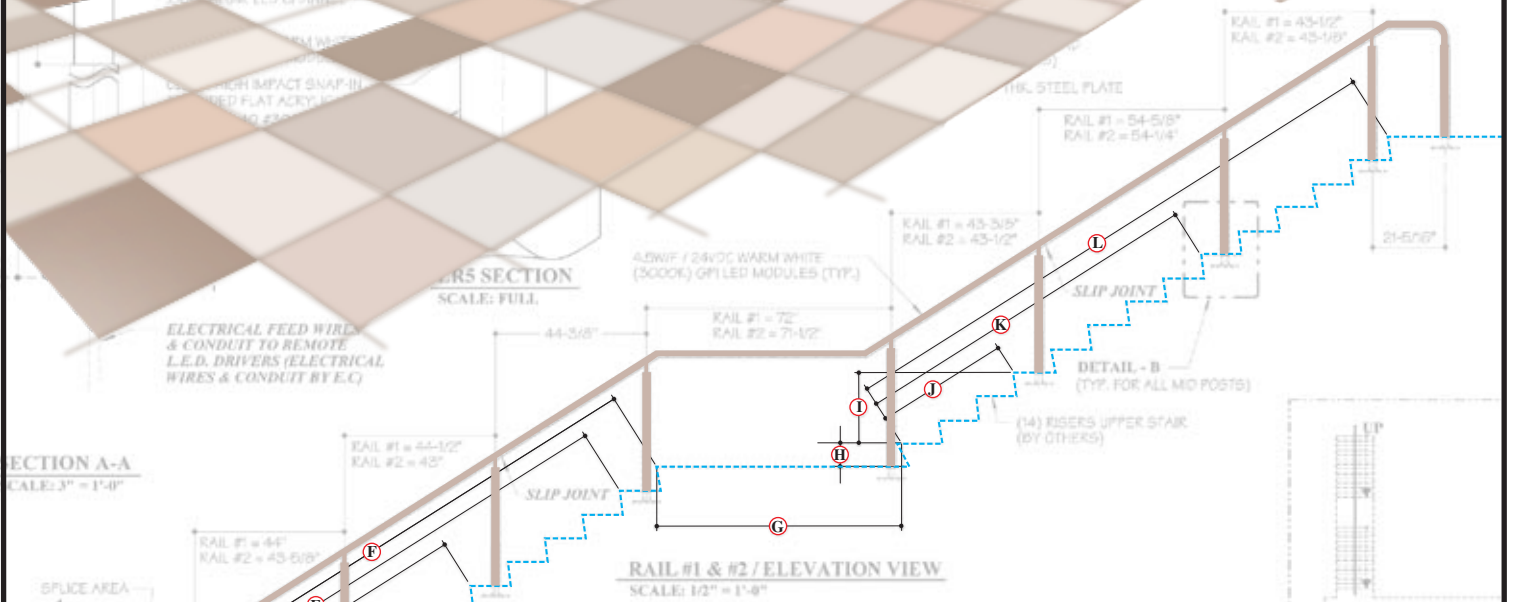


LIGHTRAIL

Measurement Instructions



FIELD DIMENSIONS CHART

	A	B	C	D	E	F	G	H	I	J	K	L
RAIL #1	6-5/8"	27-1/2"	52"	104-1/2"	156-3/4"	170"	71-1/2"	7-1/8"	21-1/2"	39"	104-1/4"	170"
RAIL #2	6-7/8"	27-7/8"	51-3/4"	103-5/8"	156-1/2"	169-1/4"	71-1/2"	7-1/8"	21-1/8"	39"	104-1/2"	169-5/8"

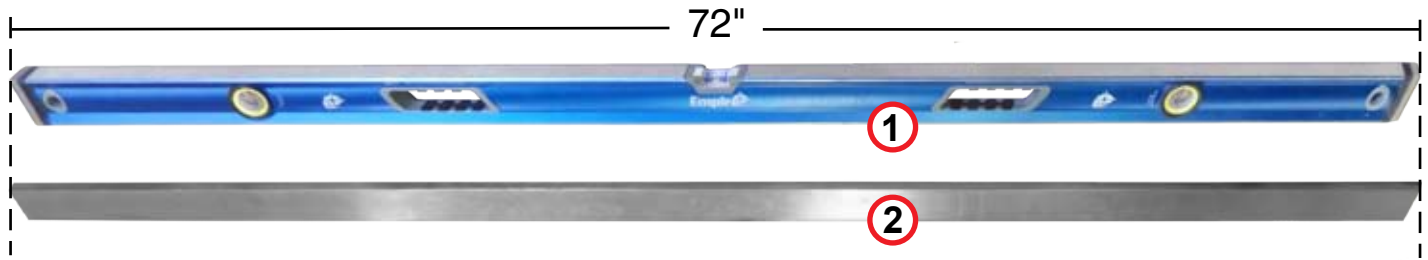
CAT. No. LR5P-SS-LED-SP
TYPE: L7

NOTES:
 1.) PROVIDE FIELD DIMENSIONS BY CHART PRIOR TO FABRICATION
 2.) INPUT VOLTAGE = 277V
 3.) 4.5 WATT PER FOOT (3000%) WARM WHITE GPI LED
 4.) FINISH = 48 GA. TYPE 304 STAINLESS STEEL. ALL FABRICATION TO MATCH TYPE L7.

SITE PLAN
SCALE: NONE

Measuring tools

-- Images not to scale --



① 72-inch Level (1829mm) or a

② 72-inch Straight Edge (1829mm)

③ 100-foot tape measure

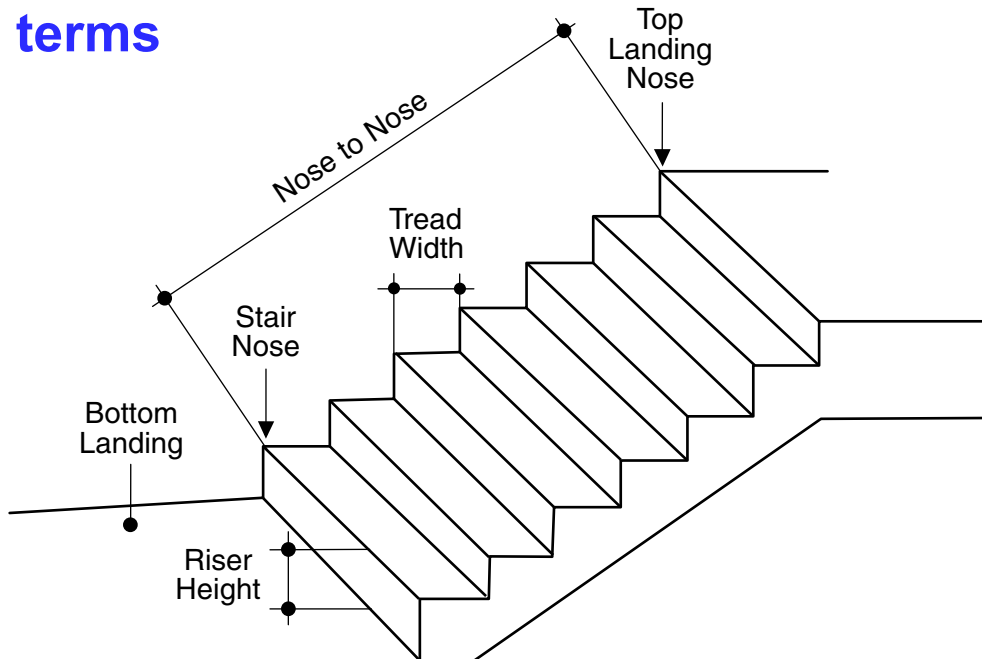
④ 25-foot tape measure

⑤ Small Torpedo Level (for use with straight edge)

⑥ Cross-line Laser Level (alternate Level)



Standard terms

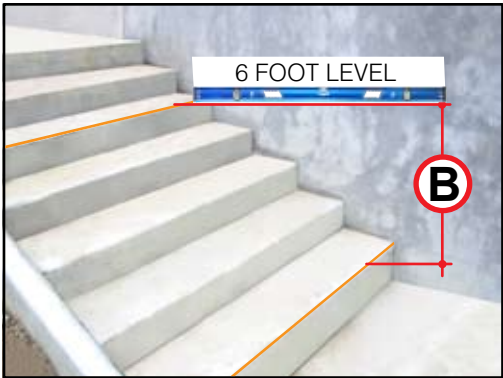




Step 1 *(Reference Photos)*

A Dimension

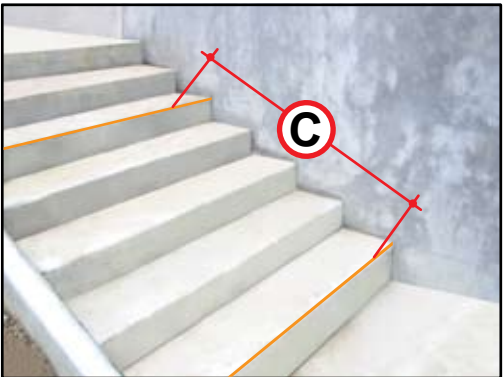
Measure one vertical riser dimension from stair nose to stair surface.



Step 2

B Dimension

Using 6 foot Level or straight edge with Level at top nose; Measure vertical dimension of Top landing nose to bottom stair nose.

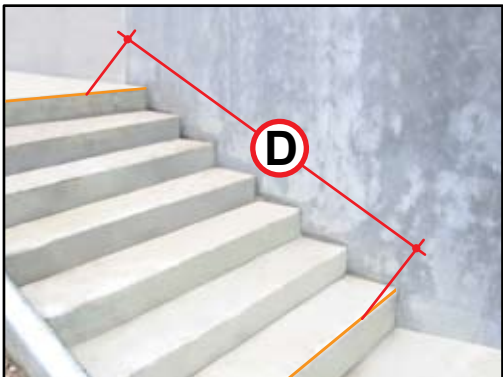


Step 3

C Dimension

Measure from top tread nose to bottom stair nose.

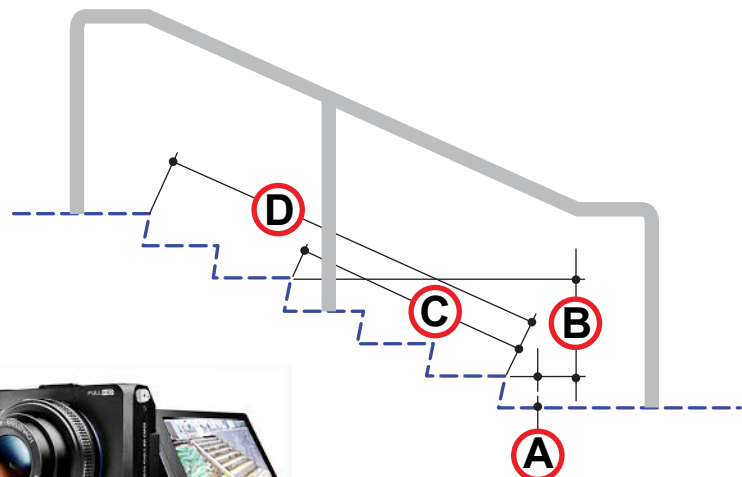
Nose to nose.



Step 4

D Dimension

Measure overall lengths of stairs. Top riser nose to bottom of riser nose.

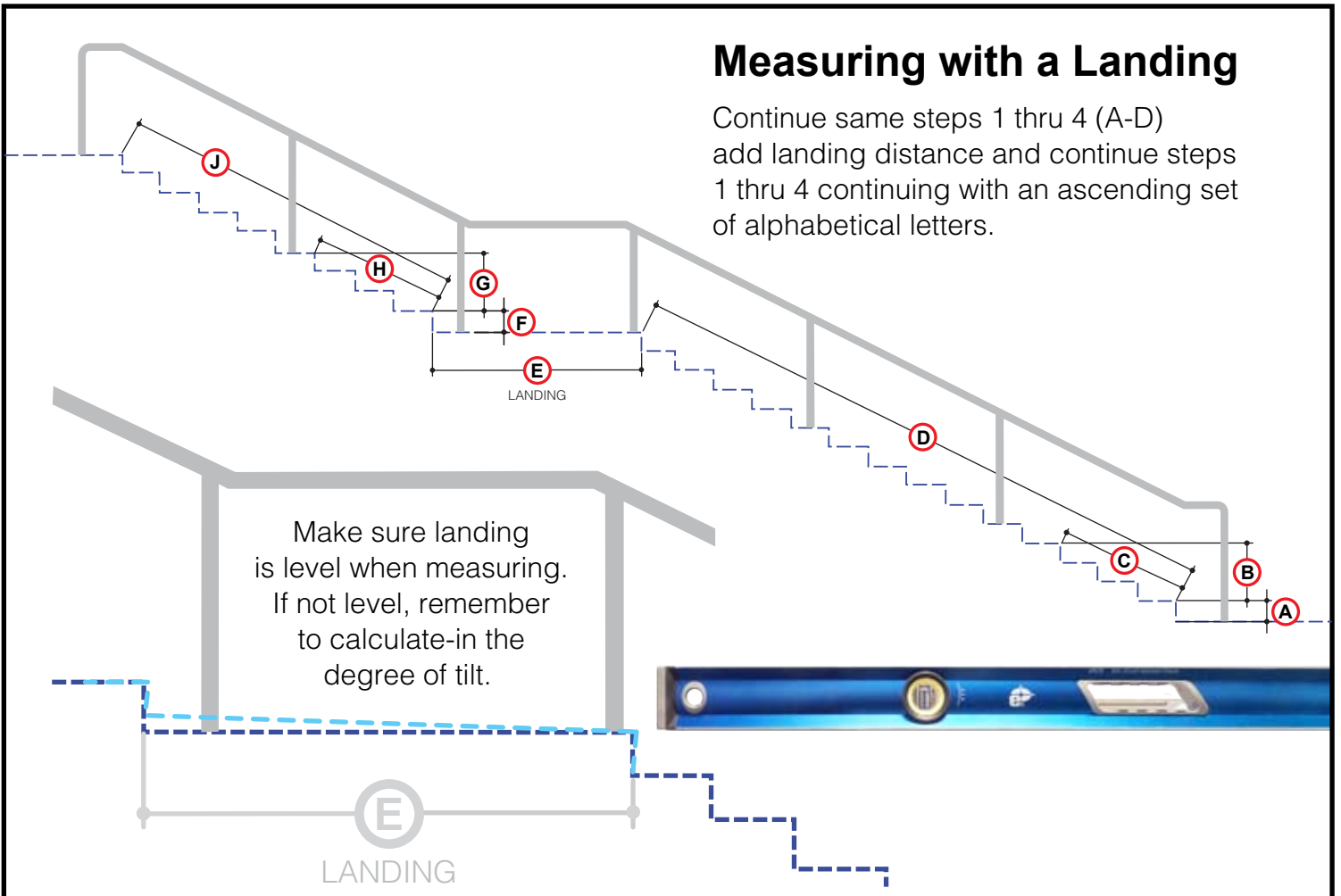


NOTES: Take photos of jobsite stairs at several angles. Advise if pavers or tiles are to be applied later and send detail with dimensions.



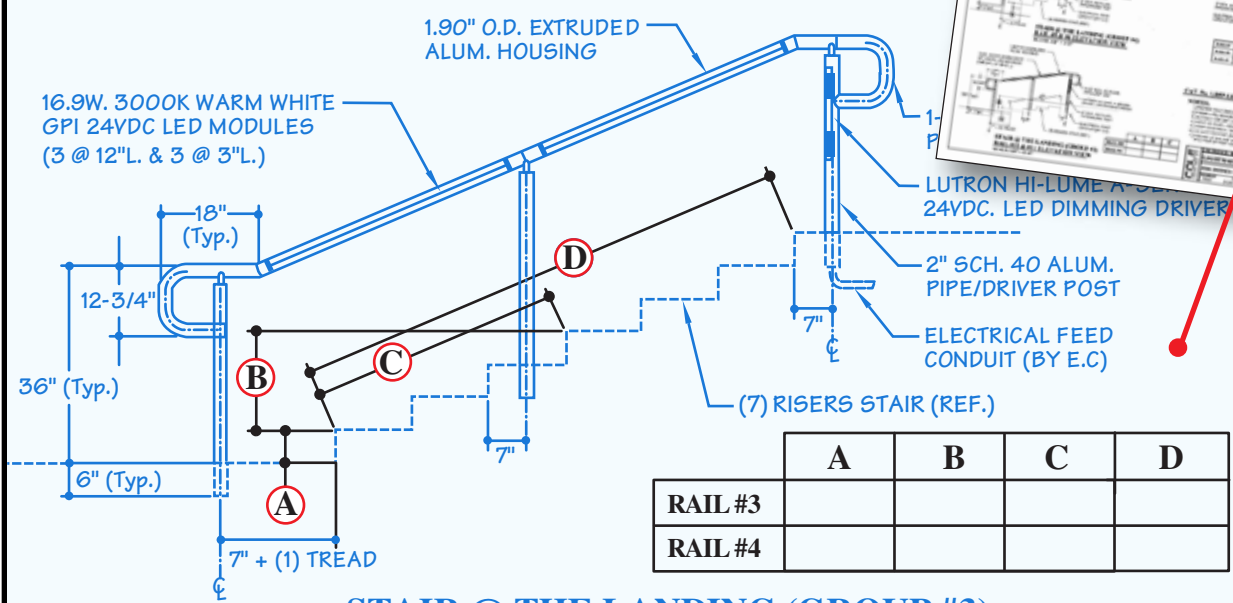
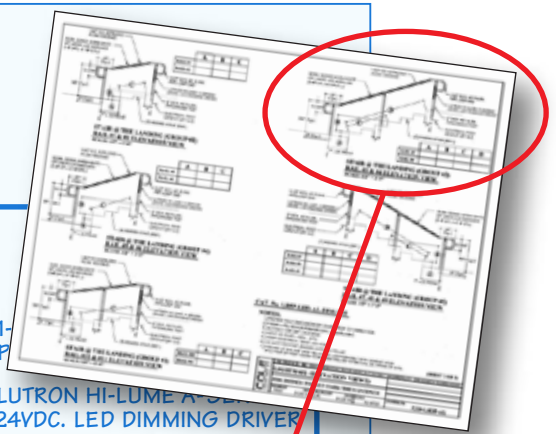
Measuring with a Landing

Continue same steps 1 thru 4 (A-D) add landing distance and continue steps 1 thru 4 continuing with an ascending set of alphabetical letters.



Filling out Submittal

Fill in blank-boxes provided on submittal page, with precise measured dimensions.



	A	B	C	D
RAIL #3				
RAIL #4				

**STAIR @ THE LANDING (GROUP #3)
RAIL #3 & #4 ELEVATION VIEW**