

**JOB NAME** \_\_\_\_\_

**TYPE** \_\_\_\_\_

**CATALOG NUMBER** \_\_\_\_\_

## Plugging Box

## TL310-WCS SERIES

### SPECIFICATIONS

#### Construction

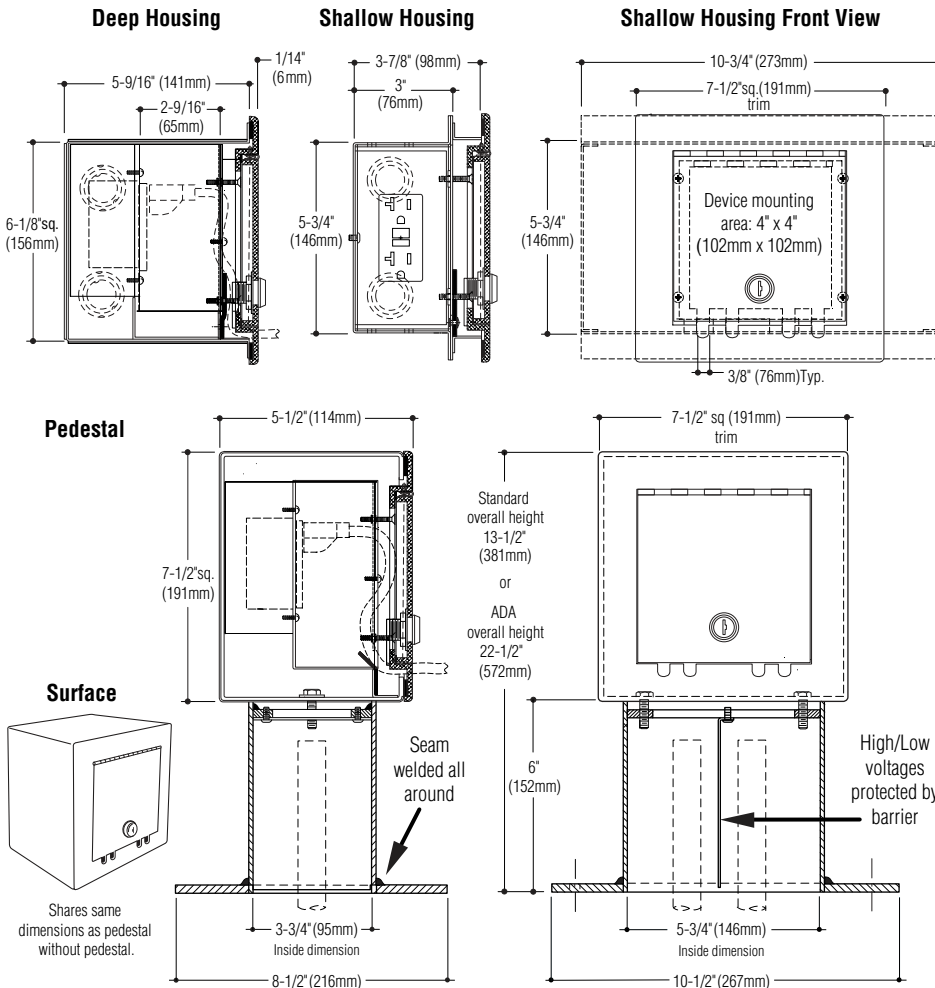
Cover is cast aluminum with self-closing, locking door • All units keyed alike • Cord slots backed with a rubber baffle system prevents the ingress of water • Recessed housing is 16 gauge electro-galvanized steel • Pedestal models are 1/8" aluminum • Cover and housing coated with metallic aluminum polyester powder coating

#### Electrical

Various wiring device combinations are available as indicated with catalog suffixes • Barrier provided between high and low voltage devices • Recessed housing has eight 1/2" - 3/4" - 1" combination trade-size knockouts • Pedestal allows for two conduit stub-ups • ETL listed while in use

#### Mounting

Recessed housing suitable for concrete pour. Pedestal models include four 4" 5/16-18 stainless steel sleeve anchors. Surface housings include mounting holes, as required.



### Catalog Numbers

- |   |   |
|---|---|
| Recessed/Deep housing, solid receptacle plate with voltage barrier    | <input type="checkbox"/> <b>TL310-WCS</b>     |
| Recessed/Shallow housing, solid receptacle plate with voltage barrier | <input type="checkbox"/> <b>TL310-WCS-SH</b>  |
| 6" Pedestal housing, solid receptacle plate with voltage barrier      | <input type="checkbox"/> <b>TL310-WCS-PED</b> |
| Surface housing, blank receptacle plate                               | <input type="checkbox"/> <b>STL310-WCS</b>    |

### Installed Devices

- |   |  |
|---|--|
| Weather resistant/tamper resistant receptacle               | <input type="checkbox"/> <b>-GFCI/WR/TR</b>                                    |
| Telephone or data connection in modular Decora® cutout      | <input type="checkbox"/> <b>-RJ11</b> or <input type="checkbox"/> <b>-RJ45</b> |
| Universal Serial Bus port                                   | <input type="checkbox"/> <b>-USB</b>   |
| High-definition multimedia interface                        | <input type="checkbox"/> <b>-HDMI</b>  |
| Specify device to be installed or desired provisions-only   | <input type="checkbox"/> <b>-9/</b> _____<br>(device or provisions)            |
| 30 amp or greater will require 14" deep specialized housing | <input type="checkbox"/> <b>-9/</b> _____<br>(indicate receptacles)            |

### Options

**Bronze cover:** Satin finished, clear coated.  
(Recessed only) Add suffix  **-B.**

**No key:** Add suffix  **-NK.**

**Pedestal height over 6":** Add suffix  **-PED/** \_\_\_\_\_  
(height).

**Custom color:** Contact factory with preference. Add suffix  **-CC.**

**ADA compliant pedestal:**  
Add suffix  **-PED/ADA.** *Maintains the minimum ADA required 15" receptacle height when pedestal is mounted at grade.*

### How to Specify

1. Select catalog number with desired features.
2. Add suffixes for options required to meet job conditions.



**C.W. Cole & Company, Inc.**  
2560 Rosemead Boulevard  
South El Monte, CA 91733-1593

**Tel.** (626) 443-2473  
**Fax** (626) 443-9253  
**info@colelighting.com**  
**www.colelighting.com**