

**JOB NAME** \_\_\_\_\_

**TYPE** \_\_\_\_\_

**CATALOG NUMBER** \_\_\_\_\_

## Plugging Box

## TL410-WCS SERIES

### SPECIFICATIONS

#### Construction

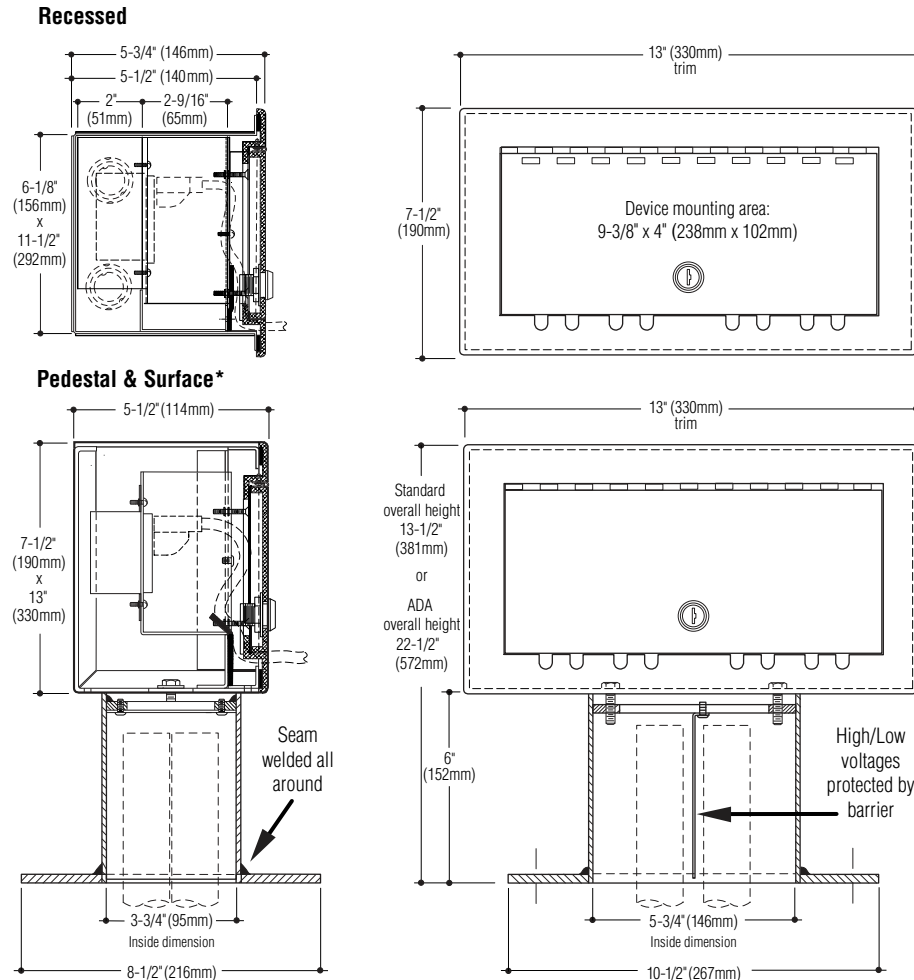
Cover is cast aluminum with self-closing, locking door • All units keyed alike • Cord slots backed with a rubber baffle system prevents the ingress of water • Recessed housing is 16 gauge electro-galvanized steel • Pedestal models are all aluminum • Cover and housing coated with metallic aluminum polyester powder coating

#### Electrical

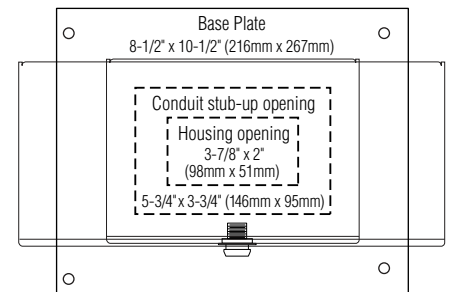
Various wiring device combinations are available as indicated with catalog suffixes • Barrier provided between high and low voltage devices  
 • Recessed housing has eight 1/2" - 3/4" - 1" combination trade-size knockouts • Pedestal allows for two conduit stub-ups • ETL listed while in use

#### Mounting

Recessed housing suitable for concrete pour. Pedestal models include four 4" 5/16-18 stainless steel sleeve anchors. Surface housings include mounting holes, as required.



\*Dimensions for surface is identical to pedestal dimensions without pedestal.



**Pedestal Conduit Clearance**

### Catalog Numbers

Recessed housing, solid receptacle plate with voltage barrier	<input type="checkbox"/> <b>TL410-WCS</b>
6" Pedestal housing, solid receptacle plate with voltage barrier	<input type="checkbox"/> <b>TL410-WCS-PED</b>
Surface housing, blank receptacle plate	<input type="checkbox"/> <b>STL410-WCS</b>

### Installed Devices

Weather resistant/tamper resistant receptacle	<input type="checkbox"/> <b>-GFCI</b>
Telephone or data connection in modular Decora® cutout	<input type="checkbox"/> <b>-RJ11</b> or <input type="checkbox"/> <b>-RJ45</b>
Universal Serial Bus port	<input type="checkbox"/> <b>-USB</b>
High-definition multimedia interface	<input type="checkbox"/> <b>-HDMI</b>
Specify device to be installed or desired provisions-only	<input type="checkbox"/> <b>-9/</b> _____ (device or provisions)
30 amp or greater will require 14" deep specialized housing	<input type="checkbox"/> <b>-9/</b> _____ (indicate receptacle)

### Options

**Bronze cover:** Satin finished, clear coated. (Recessed only) Add suffix  **-B.**

**No key:** Add suffix  **-NK.**

**Pedestal height over 6":** Add suffix  **-PED/** \_\_\_\_\_ (height).

**Custom color:** Contact factory with preference. Add suffix  **-CC.**

**ADA compliant pedestal:** Add suffix  **-PED/ADA.** Maintains the minimum ADA required 15" receptacle height when pedestal is mounted at grade.

### How to Specify

1. Select catalog number with desired features.
2. Add suffixes for options required to meet job conditions.



**C.W. Cole & Company, Inc.**  
 2560 Rosemead Boulevard  
 South El Monte, CA 91733-1593

**Tel.** (626) 443-2473  
**Fax** (626) 443-9253  
**info@colelighting.com**  
[www.colelighting.com](http://www.colelighting.com)