

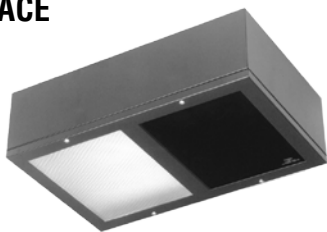
JOB NAME _____

TYPE _____

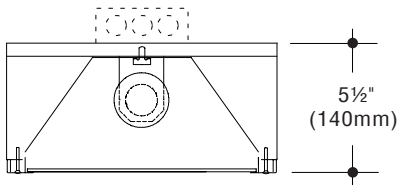
CATALOG NUMBER _____

Darkroom Safelites

SURFACE



Shown with Frosted Lens -DL
in one compartment



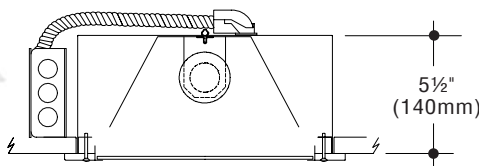
Catalog Numbers	Configuration	Dimensions
<input type="checkbox"/> PH810-S-*	<input type="checkbox"/>	11-3/4" x 9-3/4" (299mm x 248mm)
<input type="checkbox"/> PH810-2S-**-*	<input type="checkbox"/>	11-3/4" x 18-1/4" (299mm x 464mm)

- * Specify -DL and/or required filter
Max. 15W equivalent lamp per filter compartment
Max. 150W equivalent lamp in distributing lens compartment

RECESSED



Shown with Frosted Lens -DL
in one compartment



Catalog Numbers	Configuration	Dimensions inches (millimeters)	
		Housing	Trim
<input type="checkbox"/> PH810-PB-**-†	<input type="checkbox"/>	11-3/4" x 9-3/4" (299 x 248)	13" x 10-7/8" (330 x 276)
<input type="checkbox"/> PH810-2PB-**-**-†	<input type="checkbox"/>	11-3/4" x 18-1/4" (299 x 464)	13" x 19-1/2" (330 x 495)

- * Specify -DL and/or required filter
Max. 15W equivalent lamp per filter compartment
- † Specify Ceiling Condition
- T Non-insulated. 150W max. lamp in distributing lens compartment. Thermal protection provided.
- IC Insulated. 40W maximum lamp in distributing lens compartment.

Options

Stainless Steel: Provides stainless steel trim for recessed models only. Add suffix -N.
Distributing Lens: Frosted tempered glass in one compartment for general illumination.
 Add suffix -DL.

Photographic Filters:
 No.1, Red. Add Suffix -1
 No.1A, Light Red. Add Suffix -1A
 No.2, Dark Red. Add Suffix -2
 6B, Brown. Add Suffix -6B
 Type GBX-2, Sensitive x-ray films.
 Add Suffix -GBX

For more detailed information on filters, please see chart on page 2.

SPECIFICATIONS

Construction

- Housing and trim are 20 gauge steel • Standard finish on surface models and trim of recessed models is black enamel • Recessed housing has white polyester coating • Trim is fully gasketed to insure light-tight compartments
- Plaster frame with attached junction box is provided for recessed models • One 8" x 10" Eastman Kodak filter equivalent is provided for each compartment • cULus listed

Electrical

- Wired with one E26/medium-base lamp socket in each compartment • Each compartment should be individually switched • LED Lamps rated at 2700 CCT and an incandescent equivalent of no more than 15 watts should be used in the filtered compartment. "DL" compartments can use incandescent-equivalent LED lamps of 150 watts or less.

To Specify

1. Select catalog number.
2. Add filter number and/or -DL for each compartment of model selected. Refer to filter data on back of this page.
3. For recessed models, add appropriate suffix (-T or -IC) for ceiling condition.
4. Add suffixes for options required to meet job conditions.



C.W. Cole & Company, Inc.
 2560 Rosemead Boulevard
 South El Monte, CA 91733-1593

Tel. (626) 443-2473
 Fax (626) 443-9253
 info@colelighting.com
www.colelighting.com

**Darkroom Safelites
PH810 SERIES**

Photographic Filters

FILTER KODAK equivalent	COLOR	MATERIAL	Bulb Wattage (110-130 volt)
			Direct Illumination (not less than 1.2m [4 ft.])
No.1	Red	Blue-sensitive materials, KODAGRAPH Projection, and some LINAGRAPH Papers. Most phototypesetting materials. Add suffix -1	15-watt*
No.1A	Light red	Slow orthochromatic materials. KODALITH and KODAGRAPH Orthochromatic Materials. High resolution plates. Add suffix -1A	15-watt*
No. 2	Dark red	Fast orthochromatic materials, green-sensitive x-ray films, EKTALINE Papers, and orthochromatic LINAGRAPH Papers. Add suffix -2	15-watt*
6B	Brown	Blue-sensitive x-ray films. Add suffix -6B	15-watt*
Type GBX-2	Sensitive x-ray	Blue-sensitive x-ray films except SB Film. Most green-sensitive medical x-ray films except CFA, PF, Single-Coated Medical X-Ray Film-Green-Sensitive, and PHOTOFLURE Film-Green-Sensitive, all of which require Safelight Filter No. 2 (dark red). All KODAK INDUSTREX Products. Add suffix -GBX	15-watt*
		SB Film	7.5-watt*
DL		Distributing Lens: Frosted tempered glass in one compartment for general illumination. Add suffix -DL	* Incandescent equivalent



C.W. Cole & Company, Inc.
2560 Rosemead Boulevard
South El Monte, CA 91733-1593

Tel. (626) 443-2473
Fax (626) 443-9253
info@colelighting.com
www.colelighting.com