

Signs

Signal Lites S251 Series

Specifications

Construction

- Fixture is constructed of 20 gauge steel with a bronze polyester coating
- Red and green glass lenses are glazed with silicone sealant
- Sun shield is integral with faceplate
- cETLus listed, suitable for wet locations

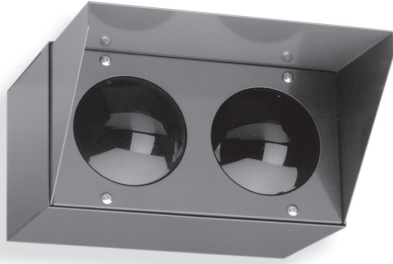
Electrical

- Wired for two 50W R20 incandescent lamps on separate circuits

Mounting

Signal mounts directly to recessed junction box.

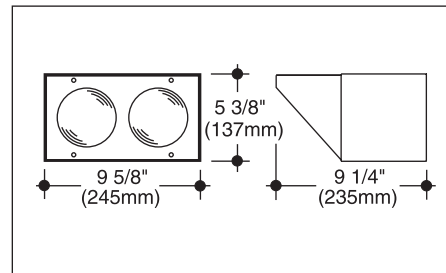
Surface Signal



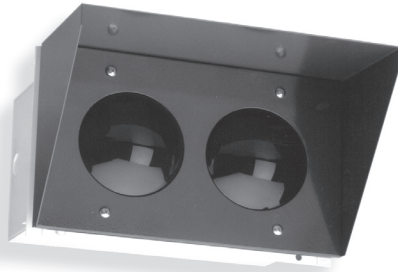
Catalog Numbers

Wall Mount	S251-W
Ceiling Mount	S251-C

The S251 provides protection against reflective glare with its integral sun shield.



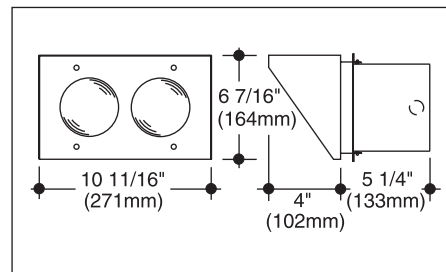
Recessed Signal



Catalog Number

Recessed	S251-R
----------	---------------

The S251-R offers the option of recessed mounting.



Specifications

Construction

- Fixture is constructed of 20 gauge steel with a bronze polyester coating
- Red and green glass lenses are glazed with silicone sealant
- Sun shield is integral with faceplate
- cETLus listed, suitable for wet locations

Electrical

- Wired for two 50W R20 incandescent lamps on separate circuits

Mounting

Plaster mounting frame is provided.



C. W. Cole & Company, Inc.
2560 N. Rosemead Boulevard
South El Monte, CA 91733-1593

Fax (626) 443-9253
Tel. (626) 443-2473
info@colelighting.com
www.colelighting.com