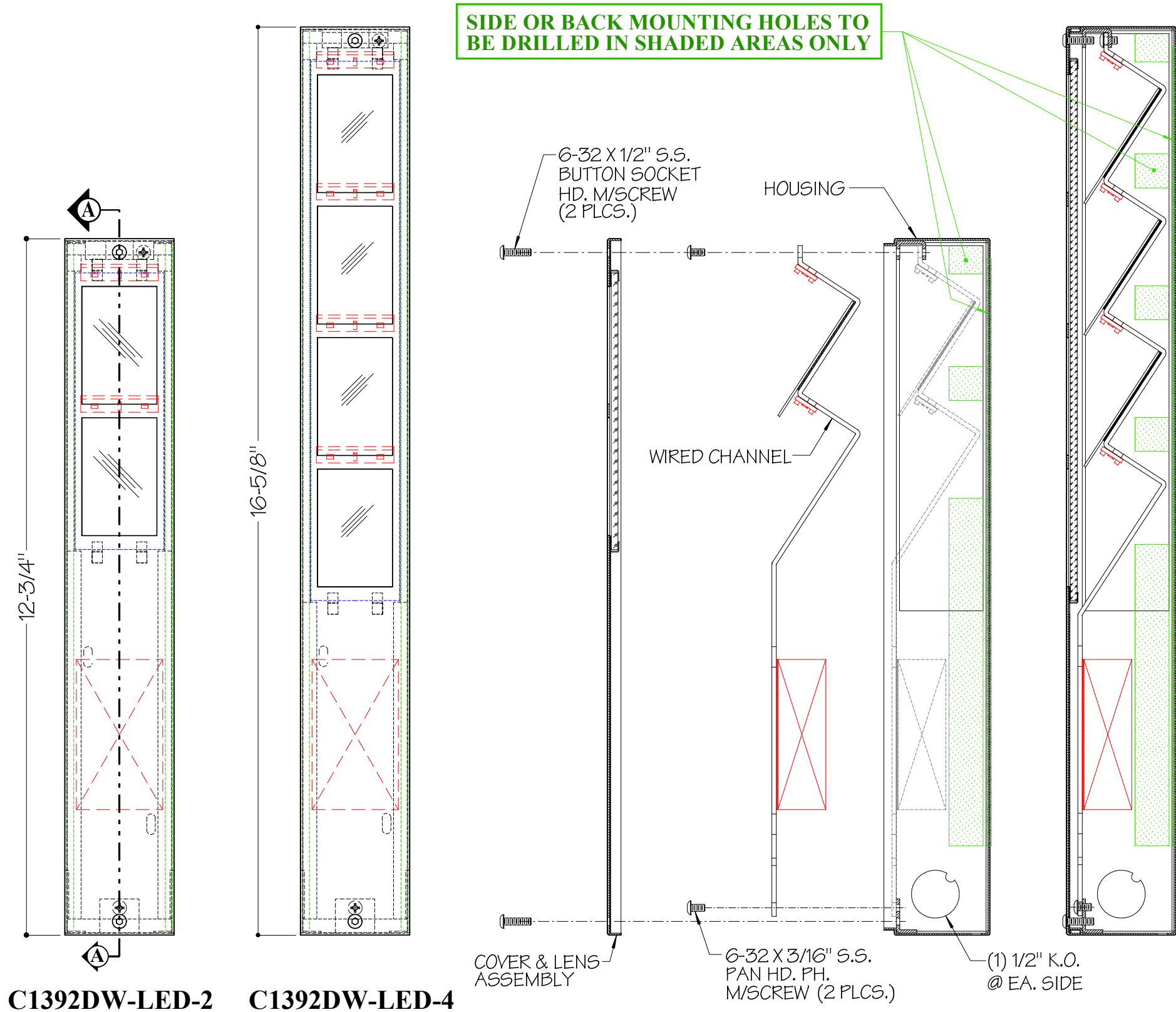


Railite Installation Instruction Sheet

C1392DW SERIES

050924R



C1392DW-LED-2 **C1392DW-LED-4**
FRONT VIEW

SECTION A-A

INSTALL INSTRUCTIONS:

- 1.) Turn off all power to fixture prior to insatallation.
- 2.) Remove (2) 6-32 button socket head screw (provided) from cover & lens assembly & set cover & lens assembly aside.
- 3.) Detach (2) 6-32 pan head screws (supplied) from (2 pc.) wired channel & set (2 pc.) wired channel aside.
- 4.) Drill mounting holes as needed in sides or at back of housing (as shown) to secure fixture in desired location.

MOUNTING HOLES TO BE DRILLED IN SHADED AREAS ONLY

CAULK AROUND ALL MOUNTING HOLES & CONDUIT ENTRIES FOR PROPER SEAL (BY E.C.)

- 5.) Connect conduit to K.O. on one or both sides of housing & make all wire connections (by E.C.).
- 6.) Replace (2 pc.) wired channel into housing & fasten in place with (2) 6-32 pan head screws previously removed.
- 7.) Rettach cover assembly back in place with (2) 6-32 button socket head screws previously removed.
- 8.) Turn power on to fixture.

NOTE:
 "THIS PRODUCT MUST BE INSTALLED IN ACCORDANCE WITH THE APPLICABLE INSTALLATION CODE BY A PERSON FAMILIAR WITH THE CONSTRUCTION AND OPERATION OF THE PRODUCT AND THE HAZARDS INVOLVED".